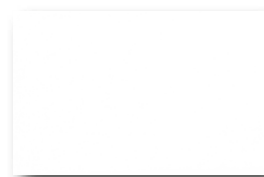


Kolory stalowych rynien górnych V10/
V10 steel headrail colors



018



511



183



058



2005



168



107



211

Kolory stalowych rynien górnych V10/
V10 steel headrail colors



210



490



411



7162



412



105

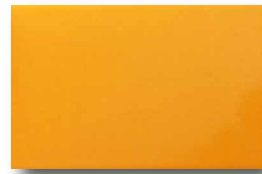


491

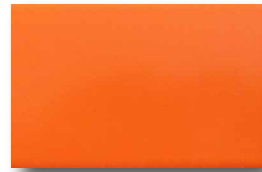


1926

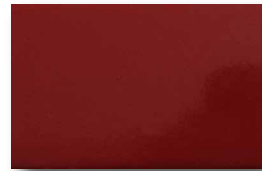
Kolory stalowych rynien górnych V10/
V10 steel headrail colors



043



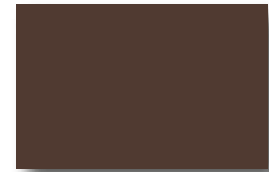
179



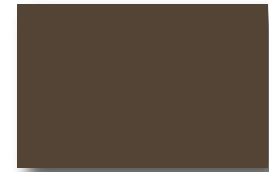
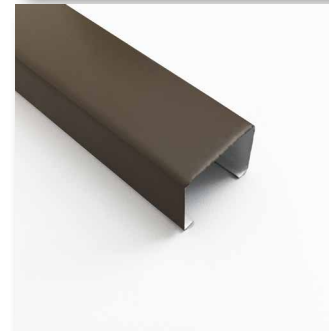
475



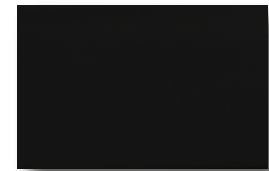
517



117



115



164

Kolory stalowych rynien górnych V10/
V10 steel headrail colors

